

# Perry Central Community School Corporation

18677 Old State Road 37, Leopold, IN 47551

812-843-5576 phone; 812-843-4746 FAX

[www.pccs.k12.in.us](http://www.pccs.k12.in.us)



September 8, 2021

Dear Perry Central Families:

It was announced today that Perry County is returning to advisory level **ORANGE**. This means that starting tomorrow (9/9/21) masks will be optional at Perry Central. Masks are still mandatory on school buses.

Governor Holcomb issued a new Executive Order last week that changed quarantine guidelines for schools. When all students are masked, no students are required to quarantine because of exposure to a positive case. Because of this, we strongly encourage students to continue masking in classrooms. The Indiana State Department of Health has updated its guidance accordingly, and this information is attached for your reference. If a student chooses not to mask, then he or she would be subject to the traditional 14/10/7 day quarantine guidelines. We will continue to group students throughout the school day and maintain social distance to the extent possible.

Our protocols will continue to be monitored and changed as necessary based on recommendations from the health department and Perry Central's COVID-19 data. We will continue to communicate relevant changes with families. Thank you for your understanding and support.

I wish you well,

A handwritten signature in blue ink that reads "Tara Bishop".

Tara Bishop, Superintendent

(812) 719-9839

[tbishop@pccommodores.org](mailto:tbishop@pccommodores.org)

# Wear a mask. Stay in school.



## COVID-19 School Scenarios

The option to not quarantine does not apply outside the classroom setting, including lunch, band, choir or extra-curricular activities.

### MASK REQUIREMENT

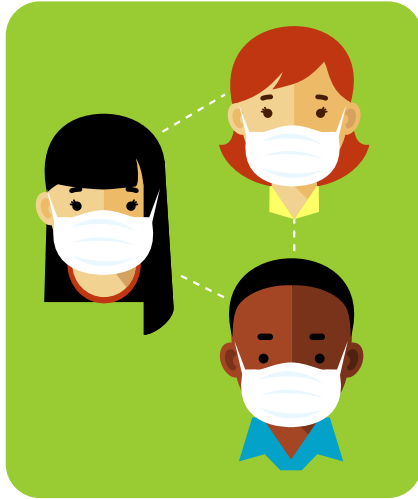
When a masked person tests positive and close contacts are wearing masks

COVID +

Close Contacts



**ISOLATE**



**NO QUARANTINE**  
**SELF-MONITOR**

### NO MASK REQUIREMENT

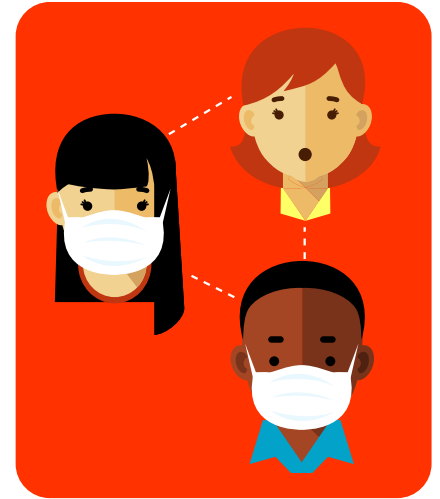
When positive person and/or close contacts are not wearing masks

COVID +

Close Contacts



**ISOLATE**



**QUARANTINE**  
**(ALL WITHIN 6 FT. UNLESS FULLY VACCINATED AND ASYMPTOMATIC)**

## DEFINITIONS

### CLOSE CONTACT:

When both people are masked, in school setting close contact is when an individual is within 3 feet of a positive person for greater than 15 minutes.

When either person is unmasked, a close contact is when an individual has been within 6 feet of an infected person for greater than 15 minutes.

### SELF-MONITOR:

Perform a self-check or be monitored twice daily for a fever of 100.4 F or above. If symptoms develop, even if you're fully vaccinated, quarantine and obtain testing.

**Coordinate with your healthcare provider and local public health department.**

### QUARANTINE:

May be required when an individual has had a close contact. These individuals shall remove themselves from situations where others could be exposed/infected, and self-monitor for symptom development.

### ISOLATION:

Required when individual has tested positive for COVID-19 or develops a fever of 100.4 F or above and/or one or more of the following symptoms: a sudden onset of a cough, sudden onset of shortness of breath, or sudden loss of taste or smell. Individuals should remove themselves or be removed from situations where others could be exposed/infected.

# COVID-19 School Quarantine Guidance

## WHEN ALL ARE MASKED



### Exposure to Positive Case (positive case isolates)

Face Covering Requirement

#### Everyone **MASKED**

(Positive case and close contacts  
MASKED)

Close contacts within  
3 feet of positive case  
notified to monitor for  
symptoms for 14 days

(See masked close  
contact flyer)

If symptoms develop,  
quarantine and get  
tested, whether fully  
vaccinated or not.

No Face Covering Requirement

#### Anyone **UNMASKED**

(Positive case and/or close contacts  
UNMASKED)

Close contacts within  
6 feet of positive case **must  
quarantine\*** with 1 of the  
below 3 options:

1. Quarantine 14 days  
(no test needed)
2. Quarantine 10 days  
(no test needed)
3. Quarantine for 7 days.  
Return day 8 with negative  
test on day 5, 6 or 7

\* Unless fully vaccinated or  
have been ill with COVID-19  
within the previous three  
months and recovered, and  
without any symptoms.

### Note:

Applies to the **classroom setting only**. Does not apply to high-risk activities such as lunch, band, choir or extra-curriculars.

# COVID-19

## School Quarantine Guidance

### WHEN ALL ARE MASKED



#### ***Enhanced Precautions: When identified as a close contact in the K-12 classroom***

- Mask at all times throughout the school day and while on the bus. No exceptions.
- Distance as much as you can from others during the school day.
- Maximize spacing during lunch and in any high-risk class, such as music and physical education since masks will be off. Schools may consider additional spacing for those who are identified as close contacts.
- Prioritize hand hygiene
- Monitor symptoms at home before arriving at school each day
  - o If ANY signs or symptoms are identified while at home, student/teacher/staff should NOT come to school and should get tested.
  - o If symptoms develop during the school day, individual should go home as soon as possible and get tested.
    1. If COVID-19 test is positive, begin 10 days of isolation starting from the date symptoms began.
    2. If COVID-19 test is negative because individual is identified as a close contact and has symptoms, he or she must complete remaining days of a 14-day quarantine. Must also be free of symptoms and fever for at least 24 hours without the use of fever-reducing medication before returning to school.

#### ***For ALL extra-curricular activities including but not limited to music and athletics, including cheerleading:***

- Wear masks at all times while not actively performing or actively playing during your sporting activity.
- Examples of when mask should be worn:
  - o While on the sideline/bench
  - o While in the dugout
  - o While hanging out with friends
  - o In the locker room
  - o Before/after a sporting event
- Distance as much as possible when you are unmasked.
- Use hand sanitizer before and after playing/touching equipment
- Stay home if symptoms appear or if feeling sick, and get tested
- **DO NOT** participate if experiencing symptoms of COVID-19 as you can spread illness to others.